

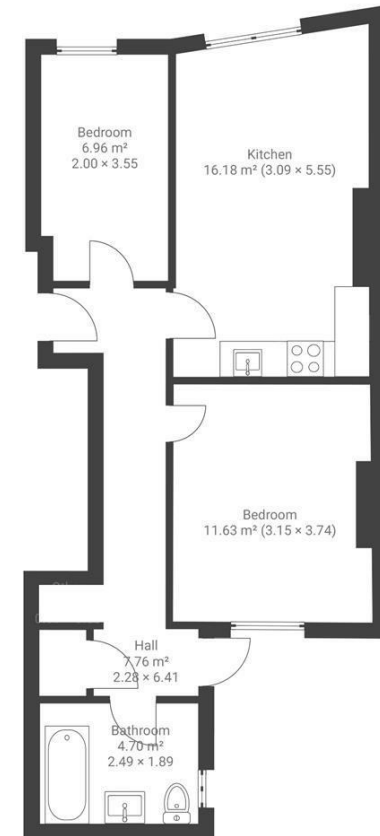
Boardwalk

Hill Avenue

BEDMINSTER, BRISTOL

Hill Avenue BEDMINSTER

APPROXIMATE FLOOR AREA
62 SQM / 667 SQFT



GROUND FLOOR



Boardwalk

Hill Avenue

BEDMINSTER, BRISTOL

£

£280,000



BS3 4SN

zzz

2 Bedrooms



1 Bathrooms

"One of the best things about living here has been being right on Victoria Park, with open views from the lounge. The high ceilings give the home a real sense of space, and having a garden has been a great bonus."

